

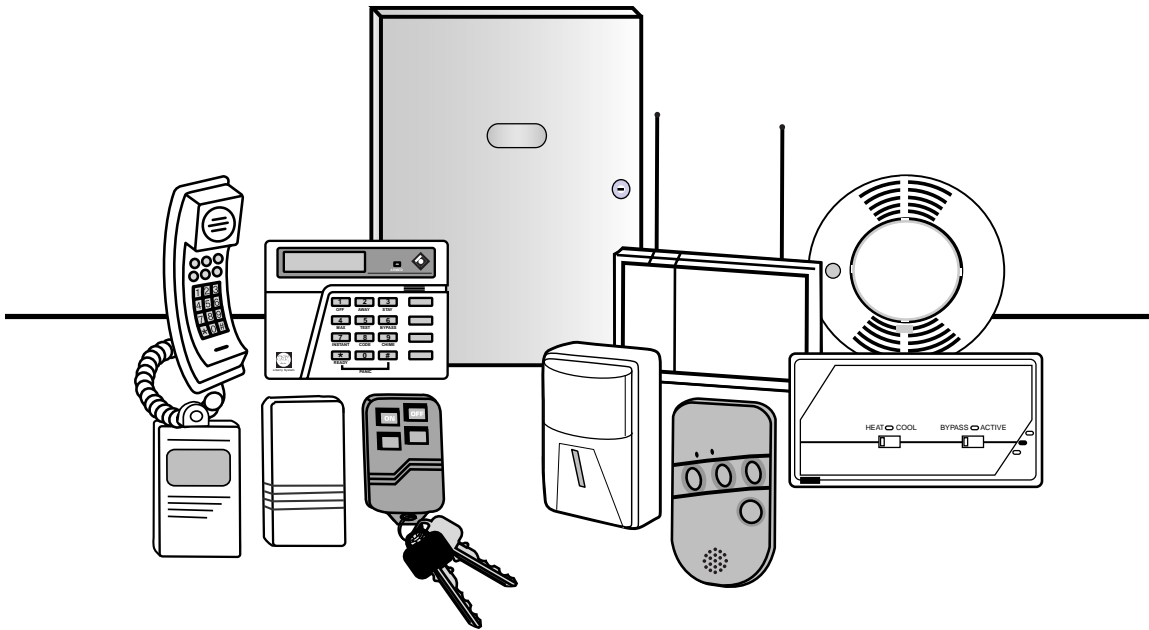
# ***VISTA-20BAY***

## ***Security System***

---

---

### ***User Guide***





# TABLE OF CONTENTS

<b>System Overview.....</b>	<b>4</b>	<b>Panic Keys .....</b>	<b>25</b>
General Information .....	4	Using Panic Keys .....	25
Zones.....	4	Types of Panic Alarms.....	25
Burglary Protection .....	4	<b>Using Device Commands .....</b>	<b>26</b>
Security Codes .....	5	General Information .....	26
Fire Protection .....	5	<b>Paging Feature.....</b>	<b>27</b>
Alarms .....	5	General Information .....	27
Memory of Alarm .....	6	Code Format.....	27
Phone Access & Voice Response Capability ..	6	Examples.....	27
Paging Feature .....	6	<b>Using the Keyswitch .....</b>	<b>28</b>
<b>Entry/Exit Delays.....</b>	<b>7</b>	General Information.....	28
General Information .....	7	Arming/ Disarming .....	28
Exit Alarms .....	8	<b>Security Codes .....</b>	<b>29</b>
<b>About The Keypads.....</b>	<b>9</b>	General Information.....	29
General Information .....	9	Babysitter Code .....	29
2-Line Alpha Keypad .....	9	Duress Code.....	29
Fixed-Word Keypad.....	9	Quick Arming .....	30
Fixed-Word Keypad Displays .....	10	To Add a User or Change a User's Code .....	30
<b>Functions Of The Keypads .....</b>	<b>12</b>	To Delete a User .....	31
<b>Checking For Open Zones.....</b>	<b>15</b>	<b>Testing the System.....</b>	<b>32</b>
Using the <input type="checkbox"/> * Key .....	15	Using the <input type="checkbox"/> 5 Key .....	32
<b>Arming Perimeter Only (Entry Delay ON)....</b>	<b>16</b>	<b>Trouble Conditions.....</b>	<b>34</b>
Using the <input type="checkbox"/> 3 Key .....	16	Typical "Check" Displays .....	34
<b>Arming Perimeter Only (Entry Delay OFF) ..</b>	<b>17</b>	<b>Fire Alarm System.....</b>	<b>37</b>
Using the <input type="checkbox"/> 7 Key .....	17	General Information.....	37
<b>Arming All Protection (Entry Delay ON) .....</b>	<b>18</b>	In Case Of Fire .....	37
Using the <input type="checkbox"/> 2 Key .....	18	<b>Recommendations for Proper Protection ...</b>	<b>39</b>
<b>Arming All Protection (Entry Delay OFF) ....</b>	<b>19</b>	Recommendations for Smoke and Heat	
Using the <input type="checkbox"/> 4 Key .....	19	Detectors .....	39
<b>Disarming and Silencing Alarms .....</b>	<b>20</b>	Recommendations for Proper Intrusion	
Using the <input type="checkbox"/> 1 Key .....	20	Protection .....	41
Memory of Alarm .....	20	<b>Emergency Evacuation .....</b>	<b>42</b>
<b>Bypassing Protection Zones.....</b>	<b>22</b>	<b>Maintaining Your System.....</b>	<b>43</b>
Using the <input type="checkbox"/> 6 Key .....	22	Taking Care of Your System .....	43
Quick Bypass.....	23	Replacing Batteries in Wireless Sensors.....	43
Displaying Bypassed Zones .....	23	Routine Care .....	44
<b>Chime Mode .....</b>	<b>24</b>	<b>Quick Guide to System Functions .....</b>	<b>45</b>
Using the <input type="checkbox"/> 9 Key .....	24	<b>Summary of Audible Notification .....</b>	<b>46</b>
		<b>Glossary .....</b>	<b>47</b>
		<b>Index .....</b>	<b>54</b>

## ***System Overview***

---

### **General Information**

Congratulations on your ownership of a Bay Alarm Security System. You've made a wise decision in choosing it, for it represents the latest in security protection technology today.

This system offers you three forms of protection: burglary, fire and emergency. Your system consists of at least one keypad that provides control of system operation, and includes various sensors that provide perimeter and interior burglary protection, plus smoke or combustion detectors designed to provide early warning in case of fire.

The system uses microcomputer technology to monitor all protection zones and system status, display appropriate information on the keypad(s) used with the system, and initiate appropriate alarms. Your system may also have been programmed to automatically send alarm or status messages over the phone lines to a central alarm monitoring station.

### **Zones**

Your system's sensing devices have been assigned to various "zones." For example, the sensing device on your Entry/Exit door may have been assigned to zone 01, sensing devices on windows in the master bedroom to zone 02, and so on. These numbers appear on the display, along with a description for that zone (if programmed), when an alarm or trouble condition occurs.

### **Burglary Protection**

Your system provides four modes of burglary protection: STAY, AWAY, INSTANT, and MAXIMUM, and allows you to BYPASS selected zones while leaving the rest of the system armed. You must turn on or "arm" the burglary protection portion of your system before it senses burglary alarms. The system also provides a CHIME mode, for alerting users to the opening of protected doors and windows while

## ***System Overview (cont'd)***

---

the system is disarmed. Refer to the other sections of this manual for procedures for using these features.

The following table lists the four different arming modes and the features of each.

<b>ARMING MODE</b>	<b>FEATURES FOR EACH ARMING MODE</b>			
	<b>Exit Delay</b>	<b>Entry Delay</b>	<b>Perimeter Armed</b>	<b>Interior Armed</b>
AWAY	Yes	Yes	Yes	Yes
STAY	Yes	Yes	Yes	No
INSTANT	Yes	No	Yes	No
MAXIMUM	Yes	No	Yes	Yes

### **Security Codes**

At the time of installation, you were assigned a personal four-digit security code, known only to you. You must enter that 4-digit security code when arming and disarming the system, and when performing other system functions. As an additional safety feature, other users who do not have a need to know your code can be assigned different security codes. Refer to section titled, "Security Codes" for procedures for adding security codes to the system.

### **Fire Protection**

The fire protection portion of your security system (if used) is always active and sounds an alarm if a fire condition is detected. Refer to section titled, "Fire Alarm System" for important information concerning fire protection, smoke detectors and planning emergency exit routes from the premises.

### **Alarms**

When an alarm occurs, both the keypad and external sounders sound, with the keypad displaying the zone(s) causing the alarm. If your system is connected to a central monitoring station, an alarm message is also sent. To stop the alarm sounding, simply disarm the system. Refer to section titled, "Disarming and Silencing Alarms."

## ***System Overview (cont'd)***

---

### **Memory of Alarm**

When an alarm condition occurs, the keypad displays the number of the zone that caused the problem, and the type of alarm (e.g. "FIRE," "ALARM"). It remains displayed until it is cleared by disarming the system (see "Disarming and Silencing Alarms").

### **Phone Access & Voice Response Capability**

Your system may include a phone module that permits you to access the system via a TouchTone telephone, either on-premises or by call-in when away. The phone access feature enables you to do the following:

- Receive synthesized voice messages over the telephone regarding the status of the security system.
- Arm and disarm the system and perform most function commands via the telephone, with voice confirmation provided after each command entry.

### **Paging Feature**

With the paging feature programmed for your system, your pager responds to certain conditions as they occur in your system. Your pager displays code numbers indicating the type of condition that has occurred. Refer to section titled, "Paging Feature" for detailed information.

## *Entry/Exit Delays*

---

### **General Information**

Your system has preset time delays, known as Exit Delay and Entry Delay. Whenever you arm your system, **Exit Delay** gives you time to leave through the designated exit door without setting off an alarm. Exit Delay begins immediately after entering any arming command, and applies to all modes of arming protection. If programmed, a slow beeping will sound throughout the exit delay period.

**Entry Delay** gives you time to disarm the system when you re-enter the premises through the designated entrance door. But you must disarm the system before the entry delay period ends, or an alarm occurs. The keypad beeps during the entry delay period, reminding you to disarm the system. There are two entry delays (if programmed). The first is for your primary entrance and the second can be used for a secondary entrance, where a longer delay is required to walk to the keypad to disarm the system.

You can also arm the system with no entry delay at all by using either the INSTANT or MAXIMUM arming modes. This mode provides greater security while on the premises.

See your installer for your delay times (you may want to record them below).

Exit Delay:  seconds

Entry Delay 1:  seconds

Entry Delay 2:  seconds

## ***Entry/Exit Delays (cont'd)***

---

### **Exit Alarms**

To minimize false alarms sent to the alarm monitoring company, your system may have been programmed for this feature. Ask your installer if Exit Alarm is active for your system.

Exit Alarm Active

Whenever you arm the system, the Exit Delay begins. If an entry/exit door or interior zone is faulted when the Exit Delay ends (e.g., exit door left open), the system sounds an alarm and starts the entry delay timer. If you disarm the system before the entry delay ends, the alarm sound stops and the message "CANCELED ALARM" or "CA" is displayed on the keypad, along with a zone number indicating the faulted zone. No message is sent to the alarm monitoring company.

To clear the exit alarm condition (the open zone must be closed before the display can be cleared), enter your 4-digit security code plus OFF.

If you do not disarm the system before the entry delay ends, and an entry/exit door or interior zone is still open, the alarm sound continues and an "exit alarm" message is sent to the alarm monitoring company. The message "EXIT ALARM" or "EA" is displayed on the keypad, along with a zone number indicating the faulted zone. To stop the alarm, the system must be disarmed using your security code plus OFF key. To clear the display, enter your code plus OFF a second time.

An exit alarm also results if an entry/exit door or interior zone is faulted within 2 minutes after the end of the Exit Delay.



## ***About The Keypads***

---

### **IMPORTANT**

If the keypad beeps rapidly upon entering the premises, it indicates that an alarm has occurred during your absence and an intruder may still be on the premises.

**LEAVE IMMEDIATELY AND CONTACT THE POLICE** from a nearby safe location.

### **General Information**

Your keypad allows you to control all system functions. Keypads feature a telephone style (digital) keypad and a Liquid Crystal Display (LCD) that shows the nature and location of all occurrences.

The keypad also features a built-in sounder that sounds during alarms and troubles. The keypad also beeps during certain system functions, such as during entry/exit delay times, in CHIME mode, and when depressing any of the keys (to acknowledge the key press).

There are two basic types of keypads – a **Fixed-Word** keypad and an **Alpha** keypad (both described below).

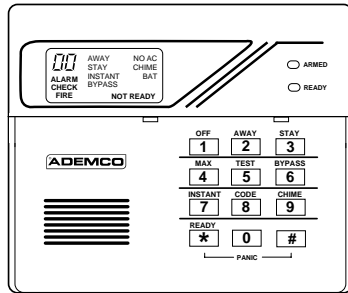
### **2-Line Alpha Keypad**

2-line Alpha keypads feature a 2-line, 32-character alphanumeric LCD that displays system messages in English. These keypads can also be programmed with custom zone descriptors. **The screen displays depicted in this manual are those that typically appear on a 2-line Alpha keypad.**

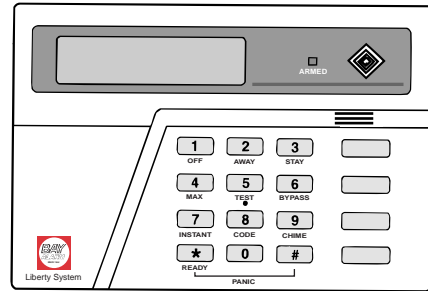
### **Fixed-Word Keypad**

Fixed-Word keypads are functionally identical to Alpha keypads, but the LCD display uses pre-designated words to identify the nature and location of occurrences.

## About The Keypads (cont'd)



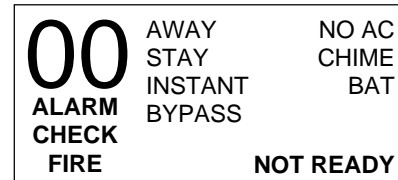
**6128  
FIXED-WORD KEYPAD**



**SK6139A-BAY  
2-LINE ALPHA KEYPAD**

### Fixed-Word Keypad Displays

- AWAY:** All burglary zones, interior and perimeter, are armed.
- STAY:** Perimeter burglary zones, such as protected windows & doors, are armed.
- INSTANT:** Perimeter burglary zones are armed and entry delay is turned off.
- BYPASS:** One or more burglary protection zones have been bypassed.
- NOT READY:** Appears when burglary portion of the system is not ready for arming (due to open protection zones).
- READY:** The burglary system is ready to be armed.
- NO AC:** Appears when AC power has been cut off. System is operating on backup battery power.
- AC:** Appears when AC power is present.



**FIXED-WORD  
KEYPAD DISPLAY**

## ***About The Keypads (cont'd)***

---

**CHIME:** Appears when the Chime feature is activated.

**BAT:** Low battery condition in a wireless sensor (if zone number displayed) or low system battery (if no zone number displayed).

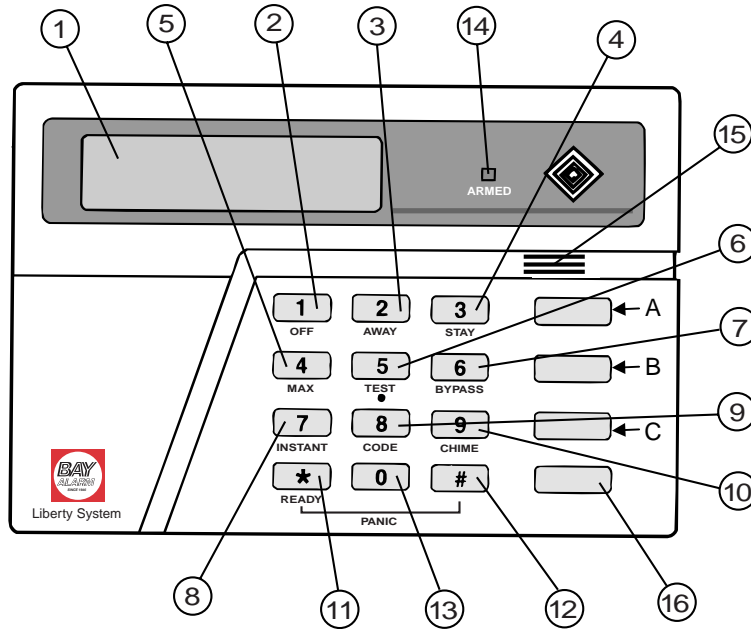
**ALARM:** Appears when an intrusion has been detected and the system is armed (also appears during a fire alarm or audible emergency alarm). Accompanied by the protection zone in alarm.

**CHECK:** Appears when a malfunction is detected in the system at any time; or if an open is detected in a FIRE zone at any time; or a fault in a DAY/NIGHT burglary zone during a disarmed period. Accompanied by a display of zone number in trouble.

**FIRE:** Appears when a fire alarm is present. Accompanied by a display of the zone in alarm.

## Functions Of The Keypads

---



### TYPICAL ALPHA KEYPAD

Fixed-Word keypads are functionally similar, except for screen displays.

1. **ALPHA DISPLAY WINDOW:** A 2-line Liquid Crystal Display (LCD). Displays protection point identification, system status, messages, and user instructions.
2. **OFF KEY:** Disarms the burglary portion of the system, silences alarms and audible trouble indicators, and clears displayed alarm trouble after the problem has been corrected.
3. **AWAY KEY:** Completely arms both perimeter and interior burglary zones for backup protection by sensing an intruder's movements through protected interior areas as well as guarding protected doors, windows, etc. Entrance can be made through an entry delay zone without causing an alarm if the system is disarmed before the entry delay time expires.

## ***Functions Of The Keypads (cont'd)***

---

4. **STAY KEY:** Arms the perimeter burglary sensors, guarding protected doors, windows and other perimeter protection points, and sounds an alarm if one is opened. Interior protection is not armed, which allows movement within your house without causing an alarm. Entrance can be made through an entry delay zone without causing an alarm if the system is disarmed before the entry delay time expires.
5. **MAX KEY:** Arms in manner similar to AWAY mode, but eliminates the entry delay period, thus providing maximum protection. An alarm occurs immediately upon opening any protection point, including entry delay zones.
6. **TEST KEY:** Tests the system and alarm sounder.
7. **BYPASS KEY:** Removes individual protection zones from being monitored by the system. Displays currently bypassed protection zones.
8. **INSTANT KEY:** Arms in manner similar to STAY mode, but turns off the entry delay period, offering greater security while inside and not expecting any late arrivals. An alarm occurs immediately upon opening any perimeter protection point, including entry delay zones.
9. **CODE KEY:** Allows the entry of additional user codes that can be given to other users of the system.
10. **CHIME KEY:** Turns the CHIME mode on and off. When on, any entry through a protected delay or perimeter zone while the system is disarmed causes a tone to sound at the keypad(s).
11. **READY KEY:** When depressed prior to arming the system, the keypad displays any open protection zones monitored by the system.
12. **# KEY:** Permits arming of the system without use of a security code ("Quick Arm," if programmed).
13. **KEYS 0-9:** Used to enter your individual security access code(s).
14. **ARMED INDICATOR: (RED)** Lit when the system has been armed in the STAY, AWAY, INSTANT, or MAXIMUM mode.

## ***Functions Of The Keypads (cont'd)***

---

15. **INTERNAL SOUNDER:** Source of audible internal warning and confirmation sounds, as well as alarms (see "Summary of Audible Notifications").

16. **PANIC KEYS:** Some keypads use key pairs to activate panic alarms, rather than individual keys. Refer

To Panic Keys for descriptions of these keys.

**IMPORTANT!**

When you use the keypad to enter codes and commands, press the keys within 2 seconds of one another. If 2 seconds elapse without a key depression, the entry is aborted and must be repeated from its beginning.

---

## Checking For Open Zones

---

### Using the ★ Key

Before arming your system, all protected doors, windows and other protection zones must be closed or bypassed (see “Bypassing Protection Zones”). Otherwise the keypad displays a “NOT READY” message. Using the [★] key displays all zones that are faulted, making it easier for you to secure any open zones.

NOTE: A green READY indicator (if present) on the keypad is lit if the system is ready to be armed. If not lit, the system is not ready.

NOT READY - PRESS ★  
TO SHOW FAULTS

#### To show faulted zones:

1.  ★ **Press The [★] Key**  
Do not enter security code, but simply press the [★] key.
2.  FAULT 05 FRONT  
UPSTAIRS BEDROOM **Secure Faulted Zones**  
Typical fault display shows open zones. Secure or bypass the zones displayed before arming the system.
3.  \*\*\*DISARMED\*\*\*  
READY TO ARM **System Can Be Armed**  
The “READY” message is displayed when all protection zones have been either closed or bypassed.  
You may now arm the system as usual.

## ***Arming Perimeter Only (Entry Delay ON)***

---

### Using the **3** Key

STAY

Use this key when you are staying home, but might expect someone to use the entrance door later.

When armed in STAY mode, the system sounds an alarm if a protected door or window is opened, but you may otherwise move freely throughout the premises. Late arrivals can enter through the entrance door without causing an alarm, but they must disarm the system within the entry delay period or an alarm occurs.

**Close all protected perimeter windows and doors before arming** (see “Checking for Open Zones”). The green READY indicator (if present) on the keypad should be lit if the system is ready to be armed.

1.     + **3**  
(Security Code)      STAY

**Enter Security Code, Then Press STAY**

Example:     then press the STAY key

*or for quick arming  
(if enabled)*

**Press the “#” key followed by the “STAY” Key**

2. 

ARMED ***STAY*** You may exit now
--------------------------------------

**Listen For 3 Beeps**

The keypad beeps three times and displays the “ARMED STAY” message. The “You may exit now” message disappears at the end of the exit delay time. The red ARMED indicator also lights.

You can restart the exit delay at any time after arming in STAY mode by pressing the  key. This is useful if you wish to open the entry/exit door to let someone in after arming the system and avoids having to disarm the system and then re-arm it again.



## Arming Perimeter Only (Entry Delay OFF)

---

### Using the Key

INSTANT

Use this key when you are staying home and do not expect anyone to use the entrance door.

When armed in INSTANT mode, the system sounds an alarm if a protected door or window is opened, but you may otherwise move freely throughout the premises. The alarm also sounds immediately if anyone opens the entrance door. **Close all protected perimeter windows and doors before arming** (See “Checking for Open Zones”). The green READY indicator (if present) on the keypad should be lit if the system is ready to be armed.

1.     +   
(Security Code) INSTANT

**Enter Security Code, Then Press INSTANT**

Example:     then press the INSTANT

*or for quick arming  
(if enabled)*

**Press the “#” key followed by the “INSTANT” Key**

2. 

ARMED *INSTANT* You may exit now
-------------------------------------

**Listen For 3 Beeps**

The keypad beeps three times and displays the “ARMED INSTANT” message. The “You may exit now” message disappears at the end of the exit delay time. The red ARMED indicator also lights.

You can restart the exit delay at any time after arming in INSTANT mode by pressing the  key. This is useful if you wish to open the entry/exit door to let someone in after arming the system and avoids having to disarm the system and then re-arm it again.

## Arming All Protection (Entry Delay ON)

---

### Using the 2 Key AWAY

Use this key when no one is staying in the premises.

When armed in AWAY mode, the system sounds an alarm if a protected door or window is opened, or if any movement is detected inside the premises. You may leave through the entrance door during the exit delay period without causing an alarm. You may also re-enter through the entrance door, but must disarm the system within the entry delay period or an alarm occurs.

**Close all protected perimeter windows and doors before arming** (see “Checking for Open Zones”). The green READY indicator (if present) on the keypad should be lit if the system is ready to be armed.

1.         + 2  
(Security Code) AWAY

*or for quick arming  
(if enabled)*

2. ARMED \*\*\*AWAY\*\*\*  
You may exit now

#### Enter security code, then press AWAY

Example: 7 2 9 6 then press the AWAY key

**Press the “#” key followed by the “AWAY” Key**

#### Listen

The keypad beeps twice, or beeps continuously if exit warning has been programmed for your system, and displays the “ARMED AWAY” message. The red ARMED indicator also lights.

The “YOU MAY EXIT NOW” portion of the message disappears when the exit delay expires.

## Arming All Protection (Entry Delay OFF)

---

### Using the 4 Key

#### MAXIMUM

Use this key when the premises is vacant for extended periods of time such as during vacation periods, long weekends, etc., or when no one is expected to be moving through protected interior areas.

When armed in MAXIMUM mode, the system sounds an alarm if a protected door or window is opened, or if any movement is detected inside the premises. You may leave through the entrance door during the exit delay period without causing an alarm, but an alarm is sounded as soon as someone re-enters.

**Close all protected perimeter windows and doors before arming** (see “Checking for Open Zones”). The green READY indicator (if present) on the keypad is lit if the system is ready to be armed.

1.         + 4  
(Security Code) MAXIMUM

**Enter Security Code, Then Press MAXIMUM**

Example: 7 2 9 6 then press the MAXIMUM key

*or for quick arming  
(if enabled)*

**Press the “#” key followed by the “MAXIMUM” Key**

2. 

ARMED *MAXIMUM* You may exit now
-------------------------------------

**Listen**

The keypad beeps twice, or beeps continuously if exit warning has been programmed for your system, and displays the “ARMED MAXIMUM” message (“AWAY/INSTANT” on fixed-word keypads). The red ARMED indicator also lights.

The “YOU MAY EXIT NOW” portion of the message disappears when the exit delay expires.

## ***Disarming and Silencing Alarms***

---

### Using the **1** Key

OFF

Use the **OFF** key to disarm the system and to silence alarm and trouble sounds. See “Summary of Audible Notification” for information that helps you to distinguish between fire and burglary alarm sounds.

**IMPORTANT:** If you return and the main burglary sounder is on, **DO NOT** enter the premises, but call the police from a nearby safe location. If you return after an alarm has occurred and the main sounder has shut itself off, the keypad beeps rapidly upon entering, indicating that an alarm has occurred during your absence and an intruder may still be on the premises. **LEAVE IMMEDIATELY** and **CONTACT THE POLICE** from a nearby safe location.

#### **To disarm the system and silence burglary alarms:**

1.     + **1**  
(Security Code)    **OFF**

#### **Enter Security Code, Then Press OFF**

Example:     then press the OFF key

2.  **\*\*\*DISARMED\*\*\***  
 **READY TO ARM**

#### **Listen For 1 Beep**

The “READY” message is displayed (if no alarms have occurred while armed) and the keypad beeps once to confirm that the system is disarmed.

### **Memory of Alarm**

If an alarm occurs, the keypad displays the zone number(s) that caused the alarm and the type of alarm. These messages remain displayed until cleared by a user.

## ***Disarming and Silencing Alarms (cont'd)***

---

### **To clear the display:**

Note the zone number displayed and enter an OFF sequence.

□ □ □ □ + **1**  
(Security Code)    **OFF**

**Enter Security Code, Then Press OFF**

Example: **7 2 9 6** then press the  
OFF key

If the "READY" message does not display, go to the displayed zone and correct the fault (close windows, etc.). If the fault cannot be corrected, notify your alarm company.

## ***Bypassing Protection Zones***

---

### Using the **6** Key

#### BYPASS

This key is used when you want to arm your system with one or more zones intentionally unprotected. Bypassed zones are unprotected and do not cause an alarm when violated while your system is armed. **All bypasses are removed when an OFF sequence (security code plus OFF) is performed.** Bypasses are also removed if the arming procedure that follows the bypass command is not successful.

*The system does not allow fire zones to be bypassed.*

**To bypass zones, the system must be disarmed first.**

1.     +   
(Security Code)    **BYPASS**

**Enter Security Code, Then Press BYPASS**

Example:     then press the BYPASS key

2.    
(Zone Numbers)

**Enter Zone Numbers**

Enter the zone number(s) for the zones to be bypassed (e.g., 01, 02, 03, etc.).

**Important!** All single-digit numbers must be preceded by a zero (for example, enter 01 for zone 1).

3. 

BYPASS 07 FRONT UPSTAIRS BEDROOM
-------------------------------------

  
Typical bypass message

**Wait**

The keypad displays the word "BYPASS" along with each bypassed zone number. Wait for these zones to be displayed, to be sure that intended zones are bypassed.

4. 

DISARMED BYPASS READY TO ARM
---------------------------------

**Arm As Usual**

Arm the system as usual when the keypad displays the "READY " message.

## ***Bypassing Protection Zones (cont'd)***

---

### **Quick Bypass**

Your system (if programmed to do so) would allow you to easily bypass all open (faulted) zones without having to enter zone numbers individually. Ask your installer if this feature is active.

1.     +   
(Security Code) **BYPASS**

**Enter Security Code, Then Press BYPASS**

Example:     then press the BYPASS key

2. 

BYPASS 07 FRONT UPSTAIRS BEDROOM
-------------------------------------

  
Typical bypass message

**Wait**

In a few moments, all open zones are displayed along with the word "BYPASS." Wait for these zones to be displayed before arming. **Arming the system before zones are displayed eliminates all bypasses.**

3. 

DISARMED BYPASS Ready to Arm
---------------------------------

**Arm As Usual**

Arm the system as usual when the keypad displays the "READY " message.

### **Displaying Bypassed Zones**

For determining what zones have been previously bypassed. Bypassed zones can be displayed only when the system is disarmed, and when the "BYPASS" message shown in step 3 above is displayed.

1.     +   
(Security Code) **BYPASS**

**Enter Security Code, Then Press BYPASS**

Example:     then press the BYPASS key

2. 

BYPASS 07 FRONT UPSTAIRS BEDROOM
-------------------------------------

  
Typical bypass message

**Wait**

In a few moments, all open zones are sequentially displayed along with the word "BYPASS."

## Chime Mode

---

### Using the Key

#### CHIME

Your system can be set to alert you to the opening of a door or window† while it is disarmed by using CHIME mode. When activated, three beeps sound at the keypad whenever a protected perimeter door or window is opened.

† Or selected doors or windows if chime-by-zone feature is active. Ask installer if this feature applies to your system.

Pressing the  key displays the open protection points.

Note that the CHIME mode can be activated only when the system is disarmed.

#### To turn CHIME mode on:

1.  +   
(Security Code) CHIME

#### Enter Security Code, Then Press CHIME

Example:  then press the CHIME key

2.   
Ready to Arm

#### View

The “CHIME” message displays while CHIME mode is on.

#### To turn CHIME mode off:

1.  +   
(Security Code) CHIME

#### Enter Security Code, Then Press CHIME

Example:  then press the CHIME key

2.   
READY TO ARM

#### View

The “CHIME” message disappears from the display.



## Panic Keys

(For Manually Activating Silent and/or Audible Alarms)

---

### Using Panic Keys

Your system may have been programmed to use special keys to manually activate panic functions. The functions that might be programmed are listed below. See your installer for the function(s) that may have been programmed for your system.

*Your installer should note the functions that are active in your system.*

#### ACTIVE PANIC FUNCTIONS

KEYS	ZONE	FUNCTION
1 and ★	95	
3 and #	96	
★ and #	99	
A	95	
B	99	
C	96	

To use a paired-key panic function, simply press both keys of the assigned pair at the same time. If your keypad has lettered keys for panic functions, press the designated key and hold down for at least 2 seconds to activate the panic function.

### Types of Panic Alarms

**A silent emergency** sends an alarm signal to the alarm monitoring company,\* but there are no audible alarms or visual displays.

**An audible emergency** sends an emergency message to the alarm monitoring company\* and sounds a loud, steady alarm at your keypad and at any external sounders that may be connected (“**ALARM**” plus a zone number is also displayed).

**A personal emergency** alarm sends an emergency message to the alarm monitoring company\* and sounds at keypads, but not at external sounders (“**ALARM**” plus a zone number is also displayed).

**A fire alarm** sends a fire alarm message to the alarm monitoring company\* and uniquely activates keypad and any external sounders (“**FIRE**” plus a zone number is also displayed).

*\*If your system is connected to an alarm monitoring company*

# Using Device Commands

---

## General Information

Your system may be set up so that certain lights or other devices can be turned on or off by using the device command from the keypad. Ask your installer if this has been done in your system. If programmed for your system, some devices may activate automatically upon certain system conditions. In this case, the following commands can be used to override the device activation. See your installer for a full explanation of this feature.

### To Activate Devices

#### Enter Security Code, Then Press # + 7 + Device Number

+  # + 7 +   
(Security Code) (Device Number)

*Example:*  7  2  9  6 then press #, then press 7, then enter the number representing the device you wish to activate. See your installer for device numbers assigned for your system.

### To Deactivate Devices

#### Enter Security Code, Then Press # + 8 + Device Number

+  # + 8 +   
(Security Code) (Device Number)

*Example:*  7  2  9  6 then press #, then press 8, then enter the number representing the device you wish to deactivate. See your installer for device numbers assigned for your system.

Device #	Device Description	Device #	Device Description
1		5	
2		6	
3		7	
4		8	

## ***Paging Feature***

---

### **General Information**

If the Paging feature has been programmed for your system, your pager responds to certain conditions as they occur in your system. This message appears in a 7-digit format explained below. You can also send up to 16 additional digits that may consist of PIN numbers, messages, reminders, etc. These 16 digits are programmed by your installer and appear before the standard 7-digit message.

### **Code Format**

The 7-digit condition code that follows takes the following form:

#### **SSS-00EE**

SSS = 3-digit event code: 911 = Alarm  
811 = Trouble  
101 = Opening (disarm)  
102 = Closing (arm AWAY)

00EE = The first 2 digits must always be 00 followed by the 2-digit user number or zone number depending on the event code.

### **Examples**

Pager displays: 911-0004. This indicates that your system is reporting an alarm (911) due to a fault in zone 4 (04). **Alarm** or **Trouble** codes are always followed by the zone numbers in which they occur.

Pager displays: 101-0011. This indicates that your system is reporting an open (101) by user 11 (0011). **Opening** or **closing** codes are always followed by the code number of the person who caused it to happen. User codes are individually assigned and programmed into the system by your installer.

## Using the Keyswitch

---

### General Information

Your system is equipped with a keyswitch for use when arming and disarming. Red and green lights on the keyswitch plate indicate the status of your system as follows:

**Green Light:** This indicator lights when the system is **disarmed and ready** to be armed (no open zones). If the system is disarmed and the green light is off, it indicates the system is not ready (one or more zones are open).

**Red Light:** This indicator lights when the system is armed or memory of alarm exists.

*Lit Steady:* System is **armed in AWAY** mode.

*Slow Flashing:* System is **armed in STAY** mode.

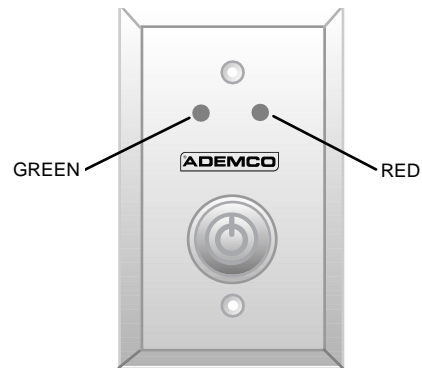
*Rapid Flashing:* Memory of alarm, indicating an alarm has occurred.

### Arming/Disarming

**To arm in the AWAY mode,** turn the key to the right for 1/2 second and release. Keypad beeps twice and the red light stays on continuously.

**To arm in the STAY mode,** turn the key to the right and hold for longer than 1 second, then release. Keypad beeps three times and the red light flashes slowly.

**To disarm the system,** turn the key to the right and release. If an alarm has occurred, the red light is flashing rapidly (memory of alarm).



# Security Codes

---

## General Information

As an additional safety feature, other users who do not have a need to know your code can be assigned different security codes. These secondary users are identified by "user numbers," which are selected when assigning a user's security code. You can assign up to 14 additional user codes (user numbers 03-16), including the babysitter and duress codes. Note that the master (primary) user of the system is the only one who can assign codes to secondary (or temporary) users, and is user number 02; user number 01 is reserved for the installer of the system.

All codes can be used interchangeably when performing system functions (a system armed with one user's code can be disarmed by another user's code), with the exception of the babysitter code described below.

## Babysitter Code

This code can be used to arm the system, but cannot disarm the system **unless** the system was armed with this code. This code is typically assigned to someone (such as a babysitter) who has a need to arm/disarm the system only at certain times. The babysitter code is assigned to user 15. The user of this code should **not** use the Quick Arming feature described on the next page.

## Duress Code

This feature is intended for use when you are forced to disarm or arm the system under threat. When used, the system acts normally, but can silently notify the alarm monitoring company of your situation, if that service has been provided. Duress code is assigned to user 16.

**Important:** This code is useful only when the system is connected to an alarm monitoring company.

## Security Codes (cont'd)

---

### Quick Arming

Note that if Quick Arming was programmed by the installer, the  key can be pressed in place of the security code when arming the system. The security code must **always** be used to disarm the system, however.

### To Add a User or Change a User's Code

**Important:** Temporary users of the system (e.g., babysitter, cleaning staff) should not be shown how to use any system function they do not need to know, such as bypassing protection zones, for example.

Sequential key depressions for all steps in a procedure must be made within 2 seconds of one another, or else the entire entry is aborted and must be repeated from its beginning (e.g., perform steps 1, 2, and 3 below with no delay between steps).

1.     +   
(Master Code)

**Enter Master Code, Then Press**

Example:     then press the  key

2.    
(User Number)

**Enter User Number**

Enter the 2-digit user number (03-16) for the user you are adding or changing.

3.      
(User's Code)

**Enter User's Code**

Enter the new 4-digit security code for that user.

### Changing the Master Code

Follow the procedure for changing a user's code, but enter user 02. Additionally, when changing the master code, you must perform step 3 twice with the same user code entry so that the new master code is accepted by the system.

## Security Codes (cont'd)

---

### To Delete a User

1.     +   
(Master Code)

**Enter Master Code, Then Press**

Example:     then press the  key

2.    
(User Number)

**Enter User Number**

Enter the 2-digit user number (03-16) for the user whose code you are deleting.

3. -----

**Stop**

Wait (about 3 seconds) until the keypad beeps once before pressing any other key. The code is automatically deleted.

## Testing the System (TO BE CONDUCTED WEEKLY)

---

Using the  Key

TEST

The TEST key puts your system into a TEST mode, which allows each protection point to be checked for proper operation. The keypad sounds a single beep every 40 seconds as a reminder that the system is in this TEST mode.

**Note:** An alarm message is not sent to your alarm monitoring company during the following tests.

1.   
 **Disarm The System**  
Disarm the system and close all protected windows, doors, etc. The "READY" message should be displayed and the green READY indicator (if present on the keypad) should also be lit.
2.  +   
(Security Code) TEST **Enter Security Code, Then Press TEST**  
Example:  then press the TEST key
3. **Listen.** The external sounder should sound for 2 seconds and then turn off. If the sounder does not sound, **CALL FOR SERVICE IMMEDIATELY.**
4. **Fault Zones.** Open each protected door and window in turn and listen for three beeps from the keypad. Identification of each faulted protection point should appear on the display. The display clears when the door or window is closed.



## ***Testing The System (cont'd)***

---

Walk in front of any interior motion detectors (if used) and listen for three beeps. The identification of the detector should appear on the display when it is activated. The display clears when no motion is detected. Note that if wireless motion detectors are used, there is a 3-minute delay between activations. This is to conserve battery life.

To test all smoke detectors, follow the manufacturer's instructions. The identification of each detector appears on the display when each is activated.

If a problem is experienced with any protection point (no confirming sounds, no display), **CALL FOR SERVICE IMMEDIATELY.**

When all protection points have been checked and are intact (closed), there should be no zone identification numbers displayed on the keypad.

When testing is completed, exit the TEST mode by continuing with step 5.

5.     +   
(Security Code)      OFF

### **Exit TEST Mode**

Enter your security code and press the OFF key.

If the test mode is inadvertently left active, it automatically turns off after approximately 4 hours.

## ***Trouble Conditions***

---

### **Typical “Check” Displays**

The word “CHECK” on the keypad's display, accompanied by a rapid beeping at the keypad, indicates that there is a trouble condition in the system. The displays in parenthesis may appear on non-alpha keypads when the associated trouble condition is present.

**To silence the beeping sound** for “CHECK” conditions, press any key.

**CHECK + Zone  
Descriptors**

Indicates that a problem exists with those displayed zone(s). First, determine if the zone(s) displayed are intact and make them so if they are not. If the zone uses a wireless detector, check that changes in the room (moving furniture, televisions, etc.) are not blocking wireless signals from the detector. If the problem has been corrected, the zone descriptor(s) and “CHECK” should disappear. If not, key an OFF sequence (security code plus OFF) to clear the display. A “CHECK” condition can also indicate a wiring problem. If the “CHECK” display persists, **CALL FOR SERVICE IMMEDIATELY.**

Note that the system does not allow arming if a “CHECK” condition exists. To arm the system with a “CHECK” condition present, you must first bypass the zone(s) causing the “Check” condition.

NOTE: A **Zone 09** display represents a problem with wireless receivers or other system devices, which are not user-serviceable. **CALL FOR SERVICE IMMEDIATELY.**

## ***Trouble Conditions (cont'd)***

---

**Telco Fault**  
(or **CHECK** and  
zone **94**)

If the telephone line monitor feature has been programmed for your system, this display indicates that the telephone line has been disconnected or cut. In some systems, this display is accompanied by a trouble sound from the keypad and the external sounder may be activated. **CONTACT YOUR SERVICE COMPANY IMMEDIATELY.**

To silence the trouble sound, enter your security code plus OFF.

**COMM. FAILURE**  
(or **FC**)

Indicates that a failure has occurred in the telephone communication portion of your system. **CALL FOR SERVICE IMMEDIATELY.**

**SYSTEM LO BAT**  
(or **BAT** with no  
zone No.)

Indicates that a low system battery condition exists, accompanied by "beeping"\* at the keypad. **CALL FOR SERVICE IMMEDIATELY.**

\* The beeping that accompanies a low battery display can be stopped by entering an OFF sequence (4-digit security code + OFF).

**LO BAT + zone**  
descriptor (or **BAT**  
with zone No.)

Indicates that a low battery condition exists in the wireless transmitter\*\* displayed, and accompanied by a once-per-minute beeping at the Keypad. **CALL FOR SERVICE IMMEDIATELY.**

\*\* Not all systems use wireless transmitters.

**MODEM COMM**  
(or **CC**)

Indicates that the control is on-line with the monitoring station's (Central Station) remote computer. The control does not operate while on-line. Wait a few minutes. The display disappears.

## ***Trouble Conditions (cont'd)***

---

<b>POWER</b> indicator (if present) is off. <b>AC LOSS</b> is displayed	The system is operating on battery power only. If only some lights are out on the premises, check circuit breakers and fuses and reset or replace as necessary. <b>CALL FOR SERVICE IMMEDIATELY</b> if AC power cannot be restored to the system.	
<b>Busy-Standby</b> (or <b>dI</b> )	If this remains displayed for more than 1 minute, system is disabled. <b>CALL FOR SERVICE AT ONCE.</b>	
<b>OPEN CIRCUIT</b> (or <b>OC</b> )	The keypad is not receiving signals from the control. <b>CALL FOR SERVICE AT ONCE.</b>	
<b>Long Rng Trbl</b> (or <b>bF</b> )	If programmed, backup Long Range Radio communication has failed. <b>CALL FOR SERVICE AT ONCE.</b>	
<b>Bell failure</b> (or <b>CHECK 70</b> )	Bell/Siren supervision failure. <b>CALL FOR SERVICE AT ONCE.</b>	
<b>RF Jam</b> (or <b>Check 90</b> )	If enabled and a Receiver Jam is detected, a report is sent to the monitoring station and at the same time a <b>Rcvr Jam</b> message toggles with the present display on the alpha keypad. When the jam condition is cleared, a Restore message is sent to the monitoring station. To clear the keypad display, enter your 4-digit security code and <table border="1"><tr><td><b>1</b></td></tr></table> key.	<b>1</b>
<b>1</b>		

# **Fire Alarm System**

## **(If Installed)**

---

### **General Information**

Your fire alarm system (if installed) is active 24 hours a day, providing continuous protection. In the event of an emergency, the installed smoke and heat detectors automatically activate your security system, triggering a loud, interrupted sound from the keypad. An interrupted sound is also produced by optional exterior sounders. A "FIRE" message (with zone location) appears at your keypad and remains on until you silence and clear the alarm display.

### **In Case Of Fire**

1. Should you become aware of a fire emergency *before* your detectors sense the problem, go to your nearest keypad and press the single panic key (or panic key pair) assigned as FIRE emergency (if programmed by the installer) and hold down for at least 2 seconds. The alarm sounds.
2. Evacuate all occupants from the premises.
3. If flames and/or smoke are present, leave the premises and notify your local Fire Department immediately.
4. If no flames or smoke are apparent, investigate the cause of the alarm. The zone descriptor of the zone(s) in an alarm condition appear on the keypad display.

### **Silencing A Fire Alarm**

1. Silence the alarm by pressing the 

1
---

 key.

To clear the alarm display, enter your security code and press the

- |   |
|---|
| 1 |
|---|

 key again.

## ***Fire Alarm System (cont'd)***

---

2. If the keypad indicates a trouble condition after the second OFF sequence, check that smoke detectors are not responding to smoke- or heat-producing objects in their vicinity. Should this be the case, eliminate the source of heat or smoke.
3. If this does not remedy the problem, there may still be smoke in the detector. Clear it by fanning the detector for about 30 seconds.
4. When the problem has been corrected, clear the display by entering your code and pressing the 

1
OFF

 key.

## ***Recommendations for Proper Protection***

---

**THE FOLLOWING RECOMMENDATIONS FOR THE LOCATION OF FIRE AND BURGLARY DETECTION DEVICES HELP PROVIDE PROPER COVERAGE FOR THE PROTECTED PREMISES.**

### **Recommendations for Smoke and Heat Detectors**

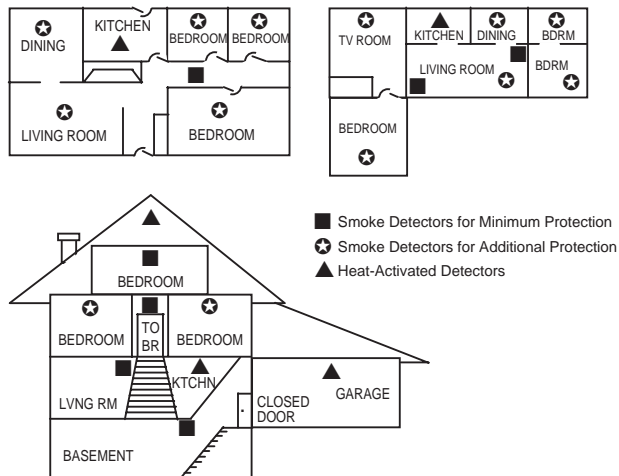
With regard to the number and placement of smoke/heat detectors, we subscribe to the recommendations contained in the National Fire Protection Association's (NFPA) Standard #72 noted below.

Early warning fire detection is best achieved by the installation of fire detection equipment in all rooms and areas of the household as follows: For minimum protection a smoke detector should be installed outside of each separate sleeping area, and on each additional floor of a multi-floor family living unit, including basements. The installation of smoke detectors in kitchens, attics (finished or unfinished), or in garages is not normally recommended.

For additional protection the NFPA recommends that you install heat or smoke detectors in the living room, dining room, bedroom(s), kitchen, hallway(s), attic, furnace room, utility and storage rooms, basements and attached garages.

## ***Recommendations For Proper Protection (cont'd)***

---



### **In addition, we recommend the following:**

- Install a smoke detector inside every bedroom where a smoker sleeps.
- Install a smoke detector inside every bedroom where someone sleeps with the door partly or completely closed. Smoke could be blocked by the closed door. Also, an alarm in the hallway outside may not wake up the sleeper if the door is closed.
- Install a smoke detector inside bedrooms where electrical appliances (such as portable heaters, air conditioners or humidifiers) are used.
- Install a smoke detector at both ends of a hallway if the hallway is more than 40 feet (12 meters) long.
- Install smoke detectors in any room where an alarm control is located, or in any room where alarm control connections to an AC source or phone lines are made. If detectors are not so located, a fire within the room could prevent the control from reporting a fire or an intrusion.



## ***Recommendations For Proper Protection (cont'd)***

---

### **Recommendations for Proper Intrusion Protection**

For proper intrusion coverage, sensors should be located at every possible point of entry to a home or commercial premises. This would include any skylights that may be present, and the upper windows in a multi-level building.

In addition, we recommend that radio backup be used in a security system so that alarm signals can still be sent to the alarm monitoring station in the event that the telephone lines are out of order (alarm signals are normally sent over the phone lines, if connected to an alarm monitoring station).

## ***Emergency Evacuation***

---

Establish and regularly practice a plan of escape in the event of fire. The following steps are recommended by the National Fire Protection Association:

1. Position your detector or your interior and/or exterior sounders so that they can be heard by all occupants.
2. Determine two means of escape from each room. One path of escape should lead to the door that permits normal exit from the building. The other may be a window, should your path be impassable. Station an escape ladder at such windows if there is a long drop to the ground.
3. Sketch a floor plan of the building. Show windows, doors, stairs and rooftops that can be used to escape. Indicate escape routes for each room. Keep these routes free from obstruction and post copies of the escape routes in every room.
4. Assure that all bedroom doors are shut while you are asleep. This prevents deadly smoke from entering while you escape.
5. Try the door. If the door is hot, check your alternate escape route. If the door is cool, open it cautiously. Be prepared to slam the door if smoke or heat rushes in.
6. Where smoke is present, crawl on the ground; do not walk upright. Smoke rises and may overcome you. Clearer air is near the floor.
7. Escape quickly; don't panic.
8. Establish a common meeting place outdoors, away from your house, where everyone can meet and then take steps to contact the authorities and account for those missing. Choose someone to assure that nobody returns to the house — many die going back.

---

## Maintaining Your System

---

### Taking Care of Your System

The components of your security system are designed to be as maintenance-free as possible. However, to make sure that your system is in reliable working condition:

1. Test your system weekly.
2. Test your system after any alarm occurs (see “Testing The System”).

### Replacing Batteries in Wireless Sensors

*Wireless sensors may not have been used in your security system*

Each wireless sensor in your system has a 9-volt or 3-volt battery. The system detects a low battery in any wireless sensor, including smoke detectors, the optional personal emergency transmitter, and the optional portable wireless keypad. (A low battery in a portable wireless keypad is detected as soon as one of its keys is pressed, and the wired keypad displays “00.”)

Alkaline batteries provide a minimum of 1 year of operation, and in most units and applications, provide 2–4 years of service. 3-volt lithium batteries provide up to 4 or more years of operation. Actual battery life depends on the environment in which the sensor is used, the number of signals that the transmitter in the sensor has had to send, and the specific type of sensor. Factors such as humidity, high or low temperatures or large swings in temperature may all lead to the reduction of actual battery life in an installation.

**If you have a low battery in a wireless sensor, a “LOW BATTERY” message is displayed on the keypad.**

In addition, a battery-operated smoke detector with a low battery also emits a single "chirp" sound approximately once every 20–30 seconds, identifying itself as the smoke detector with the weak battery.

NOTE: The “LOW BATTERY” message comes on as a warning that battery replacement in indicated sensor(s) is due within 30 days.

## ***Maintaining Your System (cont'd)***

---

In the meantime, a sensor causing a low-battery indication is still fully operational.

**Important:** Use only replacement batteries recommended by your installer.

### **Silencing Low Battery Warning Tones at the Keypad**

You can silence the keypad's warning tones by pressing the 

1
OFF

 key, but the keypad's "LOW BATTERY" message display remains on as a reminder that you have a low-battery condition in one or more of your sensors. When you replace the weak battery with a fresh one, the sensor sends a "good battery" signal to the control as soon as the sensor is activated (opening/closing of door, window, etc.), causing the "LOW BATTERY" display to turn off. If the sensor is not activated, the display automatically clears within approximately 1 hour.

### **Routine Care**

- Treat the components of your security system as you would any other electrical equipment. Do not slam sensor-protected doors or windows.
- Keep dust from accumulating on the keypad and all protective sensors, particularly on motion sensors and smoke detectors.
- The keypad and sensors should be cleaned carefully with a dry soft cloth. ***Do not spray water or any other fluid on the units.***

## ***Quick Guide to System Functions***

<b>FUNCTION</b>	<b>PROCEDURE</b>	<b>COMMENTS</b>
Check Zones	Press [*] key.	Do this to view faulted zones when system indicates it is NOT READY for arming.
Arm System	Enter code or press #, then press arming key desired (AWAY, STAY, INSTANT, MAXIMUM)	Do this to arm the system in the mode selected.
Disarm System	Enter 4-digit security code then press OFF [1] key.	Do this to disarm the system and silence alarms.
Bypass Zones	Enter 4-digit security code then press [6] key. Enter zone numbers to be bypassed (use 2-digit entries)	Do this to bypass protection zones. Bypassed zones are unprotected and do not cause an alarm if violated.
Quick Bypass	Enter 4-digit security code then press [6] key.	Do this to bypass all faulted zones automatically, if programmed.
Chime Mode ON	Enter 4-digit security code then press CHIME [9] key.	Do this to turn on CHIME mode. Keypad sounds if doors or windows are violated while system is disarmed.
Chime Mode OFF	Enter 4-digit security code then press CHIME [9] key.	Do this to turn CHIME mode OFF.
Test Mode ON	Enter 4-digit security code then press [5] key.	Do this to enter TEST mode Sounds alarm sounder and allows sensors to be tested.
Test Mode OFF	Enter 4-digit security code then press OFF [1] key.	Do this to turn TEST mode off. System returns to normal mode.
Add or Change a User	Enter 4-digit master code then press [8] key. Enter user's 2-digit user No. Enter code for that user	Do this to add or change a user code.
Delete a User	Enter 4-digit master code then press [8] key. Enter user number to be deleted	Do this to delete a user code from the system.
Change a Master Code	Enter 4-digit master code then press [8] key. Press [0] + [2] (master user no.) Enter new 4-digit master code Enter new master code again	Do this to change the existing master code.

## **Summary of Audible Notification**

### **(Alpha Display Keypads)**

<b>SOUND</b>	<b>CAUSE</b>	<b>DISPLAY</b>
LOUD, INTERRUPTED* Keypad & External	FIRE ALARM	<b>FIRE</b> is displayed; descriptor of zone in alarm is displayed.
LOUD, CONTINUOUS* Keypad & External	BURGLARY/AUDIBLE EMERGENCY ALARM	<b>ALARM</b> is displayed; descriptor of zone in alarm is also displayed.
ONE SHORT BEEP (not repeated) Keypad only	a. SYSTEM DISARMED b. SYSTEM ARMING ATTEMPT WITH AN OPEN ZONE. c. BYPASS VERIFY	a. <b>SYSTEM READY</b> is displayed. b. The number and descriptor of the open protection zone is displayed. c. Numbers and descriptors of the bypassed protection zones are displayed (one beep is heard for each zone displayed). Subsequently, the following is displayed: <b>ZONE BYPASSED SYSTEM READY</b>
ONE SHORT BEEP (once every 40 seconds) Keypad only	SYSTEM IS IN TEST MODE	Opened Zone identifications appear.
ONE BEEP (once every 40 seconds) Keypad only	LOW BATTERY AT A TRANSMITTER	<b>LO BAT</b> displayed with description of transmitter.
TWO SHORT BEEPS Keypad only	Arm AWAY OR MAXIMUM	<b>ARMED AWAY</b> or <b>ARMED MAXIMUM</b> displayed. Red ARMED indicator lit.
THREE SHORT BEEPS Keypad only	a. Arm STAY OR INSTANT b. ZONE OPENED WHILE SYSTEM IS IN CHIME MODE.	a. <b>ARMED STAY</b> or <b>ARMED INSTANT</b> displayed. Red ARMED indicator lit. b. <b>CHIME</b> is displayed, descriptor of open protection zone is displayed if the [★] key is pressed.
RAPID BEEPING Keypad only	a. TROUBLE b. MEMORY OF ALARM c. BELL FAILURE d. SYSTEM LOW BATTERY	a. <b>CHECK</b> displayed; descriptor of troubled protection zone is displayed. b. <b>FIRE</b> or <b>ALARM</b> is displayed; descriptor of zone in alarm is displayed. c. <b>BELL FAILURE</b> or <b>CHECK 70</b> is displayed. d. <b>SYSTEM LO BAT</b> or <b>BAT</b> is displayed.
SLOW BEEPING Keypad only	a. EXIT DELAY WARNING (if programmed) b. ENTRY DELAY WARNING	a. <b>ARMED AWAY</b> or <b>ARMED MAXIMUM</b> is displayed along with <b>You May Exit Now</b> . b. <b>DISARM SYSTEM OR ALARM WILL OCCUR</b> is displayed. Exceeding the delay time without disarming causes alarm.

\* If a bell is used as external sounder, fire alarm is *pulsed ring*; burglary/audible emergency is *steady ring*.

## ***Glossary***

---

The following terms are used throughout the manual.

**ARM/DISARM:** "Armed" simply means that the burglary portion of your system is turned ON and is in a state of readiness. "Disarmed" means that the burglary system is turned OFF, and must be rearmed to become operational. However, even in a "disarmed" state, "emergency" and "fire" portions of your system are still operational.

**KEYPAD:** This is the area on your keypad containing numbered pushbuttons similar to those on telephones or calculators. These keys control the arming or disarming of the system, and perform other functions that were previously described in this manual.

**ZONE:** A specific area of protection.

**BYPASS:** To disarm a specific area of burglary protection while leaving other areas operational.

**DELAY ZONE:** An area of protection containing doors most frequently used to enter or exit (typically, a front door, back door, or door from the garage into the building). The delay zone allows sufficient time for authorized entry or exit without causing an alarm. Consult your installer for the entry and exit delay times that have been set for your system during installation and record them in the space provided in "Entry/Exit Delays."

**DAY/NIGHT ZONE:** An area of protection whose violation causes a trouble indication during the disarmed (DAY) mode and an alarm during the armed (NIGHT) mode.

**UL NOTICE: This is a "GRADE A" system.**

**FEDERAL COMMUNICATIONS COMMISSION (FCC) Part 15 STATEMENT**

This equipment has been tested to FCC requirements and has been found acceptable for use. The FCC requires the following statement for your information:

This equipment generates and uses radio frequency energy and if not installed and used properly, that is, in strict accordance with the manufacturer's instructions, may cause interference to radio and television reception. It has been type tested and found to comply with the limits for a Class B computing device in accordance with the specifications in Part 15 of FCC Rules, which are designed to provide reasonable protection against such interference in a residential installation. However, there is no guarantee that interference will not occur in a particular installation. If this equipment does cause interference to radio or television reception, which can be determined by turning the equipment off and on, the user is encouraged to try to correct the interference by one or more of the following measures:

- If using an indoor antenna, have a quality outdoor antenna installed.
- Reorient the receiving antenna until interference is reduced or eliminated.
- Move the receiver away from the control/communicator.
- Move the antenna leads away from any wire runs to the control/communicator.
- Plug the control/communicator into a different outlet so that it and the receiver are on different branch circuits.

If necessary, the user should consult the dealer or an experienced radio/television technician for additional suggestions.

The user or installer may find the following booklet prepared by the Federal Communications Commission helpful: "Interference Handbook." This booklet is available from the U.S. Government Printing Office, Washington, DC 20402.

The user shall not make any changes or modifications to the equipment unless authorized by the Installation Instructions or User's Manual. Unauthorized changes or modifications could void the user's authority to operate the equipment.

**IN THE EVENT OF TELEPHONE OPERATIONAL PROBLEMS**

In the event of telephone operational problems, disconnect the control by removing the plug from the RJ31X telephone wall jack. We recommend that your certified installer demonstrate disconnecting the phones on installation of the system. Do not disconnect the phone connection inside the control/communicator. Doing so results in the loss of your phone lines. If the regular phone works correctly after the control/communicator has been disconnected from the phone lines, the control/communicator has a problem and should be returned for repair. If upon disconnection of the control/communicator, there is still a problem on the line, notify the telephone company that they have a problem and request prompt repair service. The user may not under any circumstances (in or out of warranty) attempt any service or repairs to the system. It must be returned to the factory or an authorized service agency for all repairs.



### **FEDERAL COMMUNICATIONS COMMISSION (FCC) Part 68 NOTICE**

This equipment complies with Part 68 of the FCC rules. On the front cover of this equipment is a label that contains, among other information, the FCC registration number and ringer equivalence number (REN) for this equipment. If requested, this information must be provided to the telephone company.

This equipment uses the following jacks:

An RJ31X is used to connect this equipment to the telephone network.

The REN is used to determine the quantity of devices which may be connected to the telephone line. Excessive RENs on the telephone line may result in the devices not ringing in response to an incoming call. In most, but not all areas, the sum of the RENs should not exceed five (5.0). To be certain of the number of devices that may be connected to the line, as determined by the total RENs, contact the telephone company to determine the maximum REN for the calling area.

If this equipment causes harm to the telephone network, the telephone company will notify you in advance that temporary discontinuance of service may be required. If advance notice is not practical, the telephone company will notify the customer as soon as possible. Also, you will be advised of your right to file a complaint with the FCC if you believe necessary.

The telephone company may make changes in its facilities, equipment, operations, or procedures that could affect the operation of the equipment. If this happens, the telephone company will provide advance notice in order for you to make the necessary modifications in order to maintain uninterrupted service.

If trouble is experienced with this equipment, please contact the manufacturer for repair and warranty information. If the trouble is causing harm to the telephone network, the telephone company may request you remove the equipment from the network until the problem is resolved.

There are no user serviceable components in this product, and all necessary repairs must be made by the manufacturer. Other repair methods may invalidate the FCC registration on this product.

This equipment cannot be used on telephone company-provided coin service. Connection to Party Line Service is subject to state tariffs.

This equipment is hearing-aid compatible.

When programming or making test calls to an emergency number, briefly explain to the dispatcher the reason for the call. Perform such activities in the off-peak hours; such as early morning or late evening.

**WARNING!**  
**THE LIMITATIONS OF THIS ALARM SYSTEM**

While this system is an advanced design security system, it does not offer guaranteed protection against burglary or fire or other emergency. Any alarm system, whether commercial or residential, is subject to compromise or failure to warn for a variety of reasons. For example:

- Intruders may gain access through unprotected openings or have the technical sophistication to bypass an alarm sensor or disconnect an alarm warning device.
- Intrusion detectors (e.g., passive infrared detectors), smoke detectors, and many other sensing devices do not work without power. Battery-operated devices do not work without batteries, with dead batteries, or if the batteries are not put in properly. Devices powered solely by AC do not work if their AC power supply is cut off for any reason, however briefly.
- Signals sent by wireless transmitters may be blocked or reflected by metal before they reach the alarm receiver. Even if the signal path has been recently checked during a weekly test, blockage can occur if a metal object is moved into the path.
- A user may not be able to reach a panic or emergency button quickly enough.
- While smoke detectors have played a key role in reducing residential fire deaths in the United States, they may not activate or provide early warning for a variety of reasons in as many as 35% of all fires, according to data published by the Federal Emergency Management Agency. Some of the reasons smoke detectors used in conjunction with this System may not work are as follows. Smoke detectors may have been improperly installed and positioned. Smoke detectors may not sense fires that start where smoke cannot reach the detectors, such as in chimneys, in walls, or roofs, or on the other side of closed doors. Smoke detectors also may not sense a fire on another level of a residence or building. A second-floor detector, for example, may not sense a first-floor or basement fire. Moreover, smoke detectors have sensing limitations. No smoke detector can sense every kind of fire every time. In general, detectors may not always warn about fires caused by carelessness and safety hazards like smoking in bed, violent explosions, escaping gas, improper storage of flammable materials, overloaded electrical circuits, children playing with matches, or arson. Depending upon the nature of the fire and/or the locations of the smoke detectors, the detector, even if it operates as anticipated, may not provide sufficient warning to allow all occupants to escape in time to prevent injury or death.
- Passive Infrared Motion Detectors can detect intrusion only within the designed ranges as diagrammed in their installation manual. Passive Infrared Detectors do not provide volumetric area protection. They do create multiple beams of protection, and intrusion can only be detected in unobstructed areas covered by those beams. They cannot detect motion or intrusion that takes place behind walls, ceilings, floors, closed doors, glass partitions, glass doors, or windows. Mechanical tampering, masking, painting or spraying of any material on the mirrors, windows or any part of the optical system can reduce their detection ability. Passive Infrared Detectors sense changes in temperature; however, as the ambient temperature of protected area approaches the temperature range of 90° to 105°F, the detection performance can decrease.

**WARNING!**  
**THE LIMITATIONS OF THIS ALARM SYSTEM (cont'd)**

- Alarm warning devices such as sirens, bells or horns may not alert people or wake up sleepers if they are located on the other side of closed or partly open doors. If warning devices sound on a different level of the residence from the bedrooms, then they are less likely to waken or alert people inside the bedrooms. Even persons who are awake may not hear the warning if the alarm is muffled by a stereo, radio, air conditioner or other appliance, or by passing traffic. Finally, alarm warning devices, however loud, may not warn hearing-impaired people or waken deep sleepers.
- Telephone lines needed to transmit alarm signals from a premises to a central monitoring station may be out of service or temporarily out of service. Telephone lines are also subject to compromise by sophisticated intruders.
- Even if the system responds to the emergency as intended, however, occupants may have insufficient time to protect themselves from the emergency situation. In the case of a monitored alarm system, authorities may not respond appropriately.
- This equipment, like other electrical devices, is subject to component failure. Even though this equipment is designed to last as long as 10 years, the electronic components could fail at any time.

The most common cause of an alarm system not functioning when an intrusion or fire occurs is inadequate maintenance. This alarm system should be tested weekly to make sure all sensors and transmitters are working properly.

Installing an alarm system may make one eligible for lower insurance rates, but an alarm system is not a substitute for insurance. Homeowners, property owners and renters should continue to act prudently in protecting themselves and continue to insure their lives and property.

We continue to develop new and improved protection devices. Users of alarm systems owe it to themselves and their loved ones to learn about these developments.

**SERVICING INFORMATION**

Your local Bay Alarm dealer is the person best qualified to service your alarm system. Arranging some kind of regular service program with him is advisable.

Your local Bay Alarm dealer is:

Name: \_\_\_\_\_

Address: \_\_\_\_\_

\_\_\_\_\_

Phone: \_\_\_\_\_

## OWNER'S INSURANCE PREMIUM CREDIT REQUEST

This form should be completed and forwarded to your homeowner's insurance carrier for possible premium credit.

### A. GENERAL INFORMATION:

Insured's Name and Address: \_\_\_\_\_  
\_\_\_\_\_

Insurance Company: \_\_\_\_\_ Policy No.: \_\_\_\_\_

**VISTA-20BAY** Other \_\_\_\_\_

Type of Alarm:  Burglary  Fire  Both

Installed by: \_\_\_\_\_ Serviced by: \_\_\_\_\_  
Name Name  
Address Address

### B. NOTIFIES (Insert B = Burglary, F = Fire)

Local Sounding Device \_\_\_\_\_ Police Dept. \_\_\_\_\_ Fire Dept. \_\_\_\_\_

Central Station  Name: \_\_\_\_\_  
Address: \_\_\_\_\_  
Phone: \_\_\_\_\_

### C. POWERED BY: AC With Rechargeable Power Supply

D. TESTING:  Quarterly  Monthly  Weekly  Other \_\_\_\_\_

continued on other side

**OWNER'S INSURANCE PREMIUM CREDIT REQUEST  
(cont.)**

**E. SMOKE DETECTOR LOCATIONS**

- Furnace Room       Kitchen       Bedrooms       Attic  
 Basement       Living Room       Dining Room       Hall

**F. BURGLARY DETECTING DEVICE LOCATIONS:**

- Front Door       Basement Door       Rear Door       All Exterior Doors  
 1<sup>st</sup> Floor Windows       All windows       Interior locations  
 All Accessible Openings, Including Skylights, Air Conditioners and Vents

**G. ADDITIONAL PERTINENT INFORMATION:**

---

---

---

---

---

Signature: \_\_\_\_\_ Date: \_\_\_\_\_

# Index

---

AC.....	11	Keypad Keys .....	12
AC Loss .....	38	Keypads.....	9
Add A User.....	32	Keyswitch.....	29
ALARM .....	11	Lo BAT .....	37
Alarms.....	5	Low Battery.....	46
Alpha Keypad .....	9	LRR.....	38
Arming Modes.....	5	Maintaining Your System .....	43
Audible Emergency.....	11, 25	MAXIMUM .....	4
AWAY.....	4, 10, 18, 29	MAXIMUM Mode .....	19
Babysitter Code .....	31	Memory of Alarm.....	6, 20, 29, 30
BAT .....	11	MODEM COMM .....	38
Beeping .....	7, 37	NFPA Recommendations .....	41
Bell Failure.....	38	NO AC .....	10
Burglary Protection.....	4, 12	NOT READY .....	10, 15
BYPASS .....	10	Off Key .....	20
Bypassing Zones .....	22	Paging Feature .....	6, 28
CHECK.....	11, 36	Panic Alarm .....	25
Check 90.....	38	Panic Keys.....	25
CHIME.....	11, 24	Personal Emergency .....	25, 46
CHIME Mode.....	24	POWER .....	38
Chime Mode .....	13	Quick Arming.....	16, 17, 18, 31, 32
COMM. FAILURE.....	37	Rapid Beeping.....	9
Delete A User.....	33	READY .....	10
Device Activation.....	27	Recommendations.....	42
Device Deactivation.....	27	RF Jam Detection .....	38
Disarming .....	29	Security Codes .....	5, 31
Displaying Bypassed Zones.....	23	Silence Alarms .....	20
Duress Code .....	31	Silent Emergency.....	25
Emergency Evacuation.....	44	Sounder .....	9, 14, 34, 37
Entry Delay.....	7	STAY .....	4, 10, 16, 29
Exit Alarms.....	8	System Overview .....	4
Exit Delay .....	7, 16, 17	Telco Fault .....	37
FIRE.....	11	Temporary Users .....	32
Fire Alarm.....	26, 39	Test Key .....	34
Fire Protection.....	5	Trouble Conditions .....	36
Fire Zones .....	22	User Number .....	28, 31
Fixed Word Keypad Display .....	10	Voice Module.....	6
Fixed-Word Keypad.....	9, 12	Wireless Sensor .....	46
Guide to System Functions .....	48	Zones .....	4
INSTANT .....	4, 10, 17		

## **NOTES**



**BAY ALARM**

925 Ygnacio Valley Road  
Walnut Creek, CA 94596



N7527-4V1 5/00